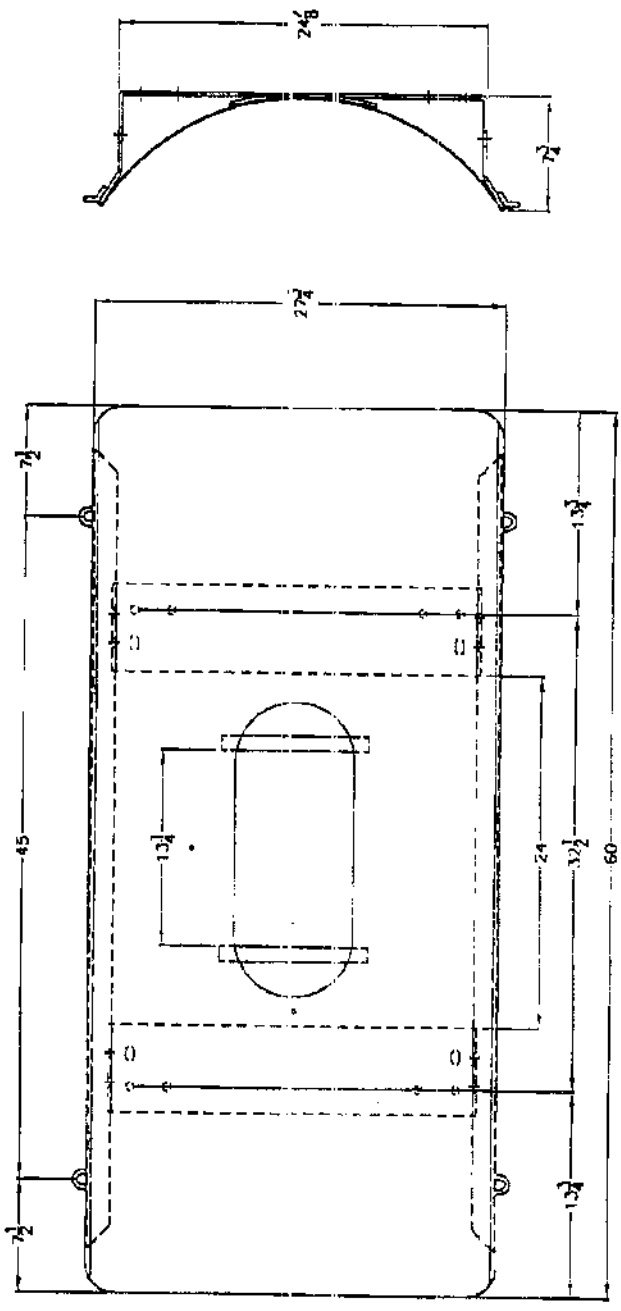


REVISIONS			
ZONE	REV	DESCRIPTION	DATE

NOT YET IN
STOCK - USE
OLD STYLE PARTS
MARKED 63019
(60308)



PARTS BAG CONTENTS:

- (2) POLY STRAP, 2" X 96"
- (4) BENT BUCKLE, 2"
- (4) J-BOLT, 1/2"
- (8) HEX NUT, 1/2"

Twin Maple Industrial Tanks
32351 Huntingdon Road
Abbotsford, B.C., V2T 5Y8
(604) 854 6776 Fax: (604) 854 3223
Toll Free: 1-866-255-8265

JTP 27FEB02

200-32 SADDLE ASSEMBLY

SIZE A FSCM NO. DWG NO. 63019

SCALE 1/12 SHEET